



# 2015 National Patios ACT Khanacross Series

## Round 5

### EVENT DETAILS

1. DEFINITION: National Patios ACT Khanacross Series (the Series) events will be held under the International Sporting Code of the FIA, the National Competition Rules of CAMS, the CAMS Khanacross Regulations, the Passenger in Vehicle Guidelines, the ACT Khanacross Series Regulations and Supplementary Regulations which are issued for each event.
2. PROMOTER: Light Car Club of Canberra (LCCC) - [www.lightcarclub.org.au](http://www.lightcarclub.org.au)
3. CAMS PERMIT: 115/3110/01
4. TYPE OF EVENT: Multi-Club Khanacross
5. DATE OF EVENT: Saturday, 31<sup>st</sup> October 2015
6. VENUE: 169 Marked Tree Road, Gundaroo NSW  
(Directions to the venue are provided later in these Supplementary Regulations)
7. TYPE OF SURFACE: Grass / Dirt
8. TESTS/COURSES: 12 (to be run at the discretion of the Clerk of Course)
9. OFFICIALS: The officials for the event will be as follows:

Clerk of Course:	Mike Behnke	☎: 0418 272 346	✉: <a href="mailto:khanacross@lightcarclub.org.au">khanacross@lightcarclub.org.au</a>
Assistant to the C of C:	Steve Hodgkin	☎: 0419 587 336	
Event Secretary:	Terrie Hornby		✉: <a href="mailto:khanacross@lightcarclub.org.au">khanacross@lightcarclub.org.au</a>
Chief Scrutineer:	Rick Gray		
CAMS Stewards:	Christine Bethwaite, Mick & Helen Nichols		
Chief Timekeeper:	Kim Day		
10. ENTRIES: Entries open: upon release of these Supplementary Regulations.  
  
Entries close: at 9:00am on the day of the event.

Submission of entries and payment of entry fee are preferred via on-line event entry facility available at: [www.cams.com.au](http://www.cams.com.au). Payment will be required in full before the end of documentation prior to commencement of the Series/event.

11. ENTRY FEES: Khanacross Series (6 events) \$200 per adult (21 and over)  
\$100 per junior (12-16 yrs) or rookie (17-21 yrs)
- Single Khanacross event \$40 per adult (21 and over)  
\$20 per junior (12-16 yrs) or rookie (17-21 yrs)

Day Membership to the LCCC is available at a rate of \$10 per competitor. Day membership will only be valid on the day of purchase. Full membership to the LCCC is also available.

All reasonable efforts will be made to run all Series events, however no refunds will be offered in the event of event cancellation/s.

12. COMPETITORS: Maximum number of competitors per event: 30  
Maximum entries per single vehicle: 3

13. SCRUTINEERING: Time: 8:00am to 9:00am Venue: Headquarters caravan at venue

14. DOCUMENTATION: Time: 8:00am to 9:00am Venue: Headquarters caravan at venue

15. DRIVER'S BRIEFING Time: 9:30am Venue: Headquarters caravan at venue

16. COURSES A walk through of the areas to be used will be conducted following the driver's briefing at the discretion of the Clerk of Course. Where course markings and areas do not change significantly through the event, a walk-through of each individual course may not be conducted.

17. EVENT TIMES First car start time: 10:00am Last car finish time: Approximately 4:00pm

A clearing of the course, with assistance from all competitors, will be followed by a short awards presentation at the completion of each event (at approximately 4:30pm).

## DOCUMENTATION

18. LICENCE A valid CAMS Level 2NS/2NSJ licence or superior must be presented at a document check. An application for a CAMS 2NS/2NSJ licence can be submitted through CAMS prior to the event (visit [www.cams.com.au](http://www.cams.com.au)), but may be lodged with the Event Secretary during documentation, accompanied by payment of the applicable fee (currently \$77 for adults, \$25 for juniors/rookies - as at 1/8/2015).

19. MEMBERSHIP Valid membership to a CAMS affiliated car club (current membership card or copy of online membership renewal receipt) must be presented during documentation. You can join the LCCC online at: [www.lightcarclub.org.au](http://www.lightcarclub.org.au). LCCC standard membership or LCCC day membership will be available for purchase on the day of each event.

## VEHICLE ELIGIBILITY

20. REGULATIONS All vehicles must comply with CAMS Khanacross Regulations (available at [www.cams.com.au](http://www.cams.com.au)).

21. EXHAUST NOISE All vehicles must be adequately muffled.

22. LOG BOOK If issued to a competition vehicle, a CAMS Vehicle Log Book must be presented at documentation.

23. PASSENGERS If a passenger is to be carried, passenger seat that is to be used by the instructional licensed driver must be a standard factory fitted or CAMS approved seat and checked by the scrutineer prior to the event start. It is the responsibility of the competitor to make it known to the scrutineer that the passenger seat is to be used during the competitive part of the event.

## CLASSES

24. Road Car Class: Open to **standard road cars** which are fitted with **road tyres only**.
25. Rally Car Class: Open to purpose built **rally cars** which are fitted with **road tyres only**.
26. Buggy Class: Open to Buggy vehicles (4H vehicles). **\*\*Please note: Buggies will not be eligible for outright event or series awards**
27. Khana Special Class: Open to modified and themed vehicles particularly intended for Khanacross use only, and which are fitted with **road tyres only**.
28. Eligibility Vehicle eligibility for each class is at the discretion of the Clerk of Course.

## CATEGORIES

29. Outright Open to all competitors including those specified below
30. Junior Open to competitors from 12 years to 16 years
31. Rookie Open to competitors from 17 years to 21 years
32. Female Open to female competitors only
33. Team Open to teams of 3 competitors (refer to conditions below)
34. Eligibility Competitor eligibility for each class is at the discretion of the Clerk of Course

## TEAMS

35. Teams must comprise of 3 competitors who have each registered for the full Series. No competitor may represent more than one team during the Series.
36. No team driver may drive more than one vehicle during the Series, **unless** a team vehicle is unable to continue in competition. Any change of vehicle will be at the discretion of the Clerk of Course.
37. Teams must be nominated prior to any team member commencing the first test.

## AWARDS & PRIZE MONEY

38. Trophies will be presented for the following categories at each event (where entries are received):

1 <sup>st</sup> Place Outright	2 <sup>nd</sup> Place Outright	3 <sup>rd</sup> Place Outright
1 <sup>st</sup> Junior Driver	1 <sup>st</sup> Rookie Driver	1 <sup>st</sup> Female Driver
1 <sup>st</sup> First Time Driver	1 <sup>st</sup> Buggy Driver	

39. Those competitors entered in the full Khanacross Series will also accrue points towards overall series awards, including:

- |   |                              |
|---|------------------------------|
| • 1 <sup>st</sup> Place Outright – Series Champion  | Trophy + \$200 prize money   |
| • 2 <sup>nd</sup> Place Outright - Series Runner Up | Trophy + \$100 prize money   |
| • 3 <sup>rd</sup> Place Outright Series             | Trophy + \$50 prize money    |
| • Khanacross Series Team Award                      | Trophies + \$300 prize money |
| • Junior Khanacross Champion                        | Trophy + \$100 prize money   |
| • Rookie Khanacross Champion                        | Trophy + \$100 prize money   |
| • Female Khanacross Champion                        | Trophy + \$100 prize money   |
| • Club of Origin award                              | Perpetual Trophy             |

40. ACT Khanacross Series Encouragement Award – this will be awarded by the Series Director at the end of the Series, taking into account feedback from senior event officials. Development of car control abilities, general attitude and willingness to assist at events will all be taken into account when determining a winner.

41. **First, Second and Third Outright Series awards will now be presented at the 2015 ACT Regional Rally Series Presentation function to be held on the 6<sup>th</sup> of February 2016. Award winners are strongly encouraged to attend this event. Other Series awards will now be presented at the LCCC end of year BBQ to be held on the 12<sup>th</sup> of December 2015. Further details on both functions to be advised shortly.**

42. Further prizes or trophies may be awarded at the discretion of the organisers.

## POINTSCORING

43. Points based on outright placings will be allocated as follows:

1st – 15 points, 2nd – 14 points, 3rd – 13 points, and so on to 15th place – 1 point

Points based on category placings will be allocated as follows:

1st – 10 points, 2nd – 9 points, 3rd – 8 points, and so on to 10th place – 1 point

A competitor/team's 5 best event results and points will count if all 6 rounds are conducted. All results and points earned will count towards the Championship if five (5) or fewer rounds are conducted.

If competitors tie at a round, the total points for the highest place they have collectively filled shall be equally shared among them.

If at the end of the Series, two or more competitors have an equal number of points, a result will be determined by a count back of outright places at each event. If competitors still tie after a count back of results, they will be declared equal status for the purpose of awards.

## TIMING AND PENALTIES

44. Timing will be by hand held stop watches. Two watches per test operated by different officials, with one watch to be the master watch and the other as a backup. Timing shall be to 0.01 of a second and recorded as such

45. Penalties shall be applied as per the CAMS National Khanacross Regulations available at [www.cams.com.au](http://www.cams.com.au).

46. Any enquiries relating to the application of penalties should be raised with the Clerk of Course in the first instance.

## COURSE AREA

47. A condition of the use of the areas for Series events is that the LCCC maintain the surface and surrounding areas used. Competitors are reminded that without the use of these areas these events would not take place.

48. Competitors are required to take their rubbish with them upon the conclusion of events.

49. Each competitor is requested to bring their own garden rake or shovel to assist with the repair of the course areas before final times and trophies will be issued.

## MISCELLANEA

50. These event Supplementary Regulations are issued in addition to the 2015 ACT Khanacross Series Competition Regulations, which available for viewing at [www.lightcarclub.org.au](http://www.lightcarclub.org.au).

51. Inexperienced drivers (either junior or adult) are permitted to carry an experienced passenger for the purpose of instruction and guidance as per the CAMS National Khanacross Regulations. Any adult driver carrying a passenger during competition is not eligible to score Series points in that event. Any competitor wishing to carry a passenger must seek approval from the Clerk of Course prior to commencing the first test.

52. Khanacross events provide the opportunity for competitors to be assessed for an Observed Licence Test (OLT). A successful OLT assessment is a requirement for gaining a higher level CAMS licence. Competitors are encouraged to undertake this opportunity during a Series event, and are required advise the CAMS Steward prior to the commencement of the first test at this event of this requirement. Further details on OLT requirements are available at [www.cams.com.au](http://www.cams.com.au).

53. The Clerk of Course may refuse any entry without assigning a reason in accordance with NCR 83.

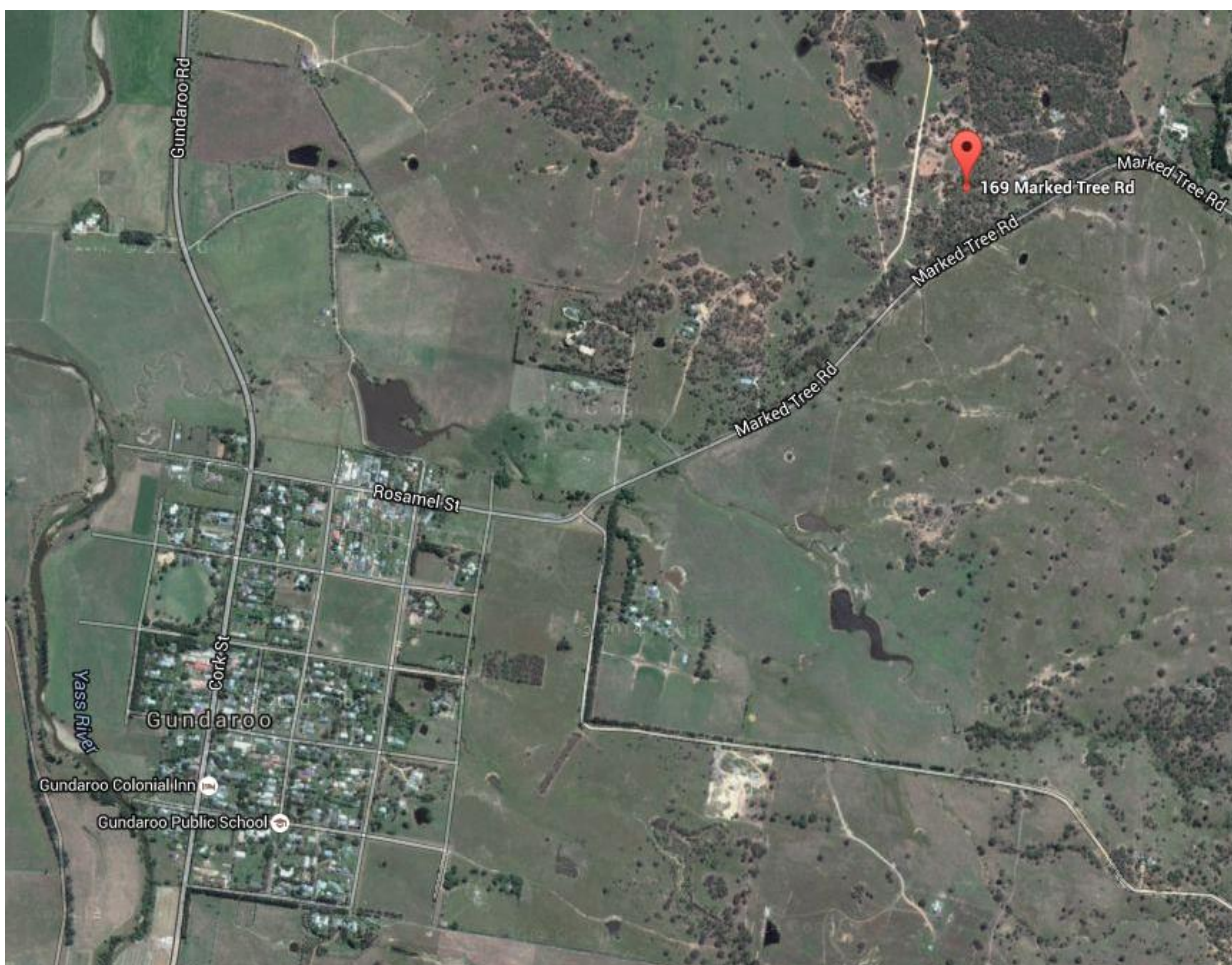
54. Entries will be accepted in order of receipt. In the event of entries being filled to capacity, priority will be given to full Khanacross Series competitors followed by new Junior/Rookie LCCC members, full financial LCCC members, LCCC day members and finally other CAMS affiliated car club members.
55. Entries on the day of each event will be subject to availability and are not guaranteed to be accepted. Competitors are advised to submit an entry and appropriate payment prior to an event wherever possible.
56. Competition numbers shall be allocated at the discretion of the Clerk of Course. Sponsor door plates and one pair of fluorescent numbers will be provided to competitors. For shared vehicles, one pair of door plates will be provided for the vehicle, along with a pair of numbers for each competitor to allow all numbers to remain on the vehicle during an event.
57. For timing purposes, it is important that non-competing drivers in shared vehicles place a strip of black magnetic material (which will be provided where required) through their numbers if not undertaking a test.
58. Certain public, property, professional indemnity and personal accident insurance is provided by CAMS in relation to the event. Further details can be found in the CAMS Insurance Handbook, available at [www.cams.com.au](http://www.cams.com.au).
59. The organisers may cancel, alter, abandon or postpone the event without assigning a reason in accordance with the provisions of NCR 59.
60. Protests, if any, must be lodged in accordance with Part XII of the NCR.
61. Spot checks for compliance with all Series Regulations will be carried out during the running of the event.
62. Any queries relating to these Series Competition Conditions or ACT Khanacross Series events should be directed to the Series Director.
63. Further information on the Light Car Club of Canberra events is available on our website at: [www.lightcarclub.org.au](http://www.lightcarclub.org.au)

## **ALCOHOL, DRUGS AND OTHER SUBSTANCES**

64. Any holder of a CAMS 'Competition' or 'Officials' licence (or equivalent licence issued by another ASN) may be tested for the presence of drugs (or other banned substances) and subject to a penalty(ies) for a breach in accordance with the CAMS Anti-Doping Policy and/or the CAMS Illicit Drugs in Sport (Safety Testing) Policy as published on the CAMS website. Consumption of alcohol in the paddock, pits or any section of the competition venue/course under the control of the Officials is forbidden until all competition is concluded each day. Accordingly, any holder of a CAMS 'Competition' or 'Officials' licence (or equivalent licence issued by another ASN) may also be tested for the presence of alcohol by a CAMS Accredited Testing Official (CATO) in accordance with the CAMS Standard Operating Procedure for Breath Alcohol Testing.

## DIRECTIONS TO THE GUNDAROO VENUE

- From Canberra take Sutton Road towards Gundaroo. Those heading from North Canberra can take Mulligans Flat Road shortcut from the back of Forde/Bonner however be aware this is a dirt road.
- Head through Gundaroo, noting this is a 50km/h speed zone. Once through town you will pass the showground on the left.
- Turn Right into Rosamel Street, which then becomes Marked Tree Road as you exit town. Follow Marked Tree Road for approximately 2 kilometres.
- Turn Left into Wurungul Lane. Note this is narrow and there will be two-way traffic.
- Travel along Wurungul Lane for approximately 500 metres, bearing right at the first junction (left is a driveway). You will come to a silver gate on the right which will be open. Car trailers will fit comfortably through this gate, however take care when moving through to avoid damage. Leave this gate open.
- The access road to the khanacross ground is diagonally left across this paddock and uphill through a narrow left turn through two gates. You will need to unload any cars off trailers in this first paddock and trailers must be left here away from the access road.
- Competition vehicles and any other required vehicles can move through the narrow access road ensuring to take care turning through the two gates. Please note there may be pedestrians accessing the two areas via this road.
- Park along the fenceline at the top of the khanacross area and make your way to the headquarters for documentation and scrutineering. If the weather has been wet further instructions will be provided on the day.
- If you get lost please call Mike on 0418 272 346



## SERIES SPONSORS

The Light Car Club of Canberra would like to thank National Patios, as well as our other sponsors for their generous support of the 2015 ACT Khanacross Series.



[www.nationalpatios.com.au](http://www.nationalpatios.com.au)



[www.penrite.com.au](http://www.penrite.com.au)



[www.coateshire.com.au](http://www.coateshire.com.au)



[www.absplumbing.com.au](http://www.absplumbing.com.au)

